



# NVIDIA QUADRO SDI CAPTURE CARD

DI-04778-001\_v01 | October 2009

## Installation Guide



# DOCUMENT CHANGE HISTORY

DI-04778-001\_v01

Version	Date	Authors	Description of Change
01	October 21, 2009	JB, SM	Initial Release

# TABLE OF CONTENTS

<b>Introduction</b> .....	<b>1</b>
About Quadro SDI Capture Card.....	1
About This Document.....	2
Other Documentation .....	2
System Requirements .....	3
<b>Functionality</b> .....	<b>4</b>
Feature Overview .....	5
Installing and Preparing your Quadro Capture Card .....	6
Installing the Quadro Capture Card .....	6
Download the NVIDIA Driver .....	6
Installing the NVIDIA Graphics Driver on Windows .....	6
Installing the NVIDIA Quadro SDI Capture WDM Driver.....	6
Verifying Graphics Driver Installation .....	7
Verifying WDM Driver Installation.....	7
Installing the NVIDIA Graphics Driver on Linux.....	8
Operating Quadro Capture Card .....	8
Understanding the Connections.....	8
Understanding LED Status Signals.....	8
Viewing the SDI Connection Status Using Topology Viewer .....	9

# INTRODUCTION

## ABOUT QUADRO SDI CAPTURE CARD

Serial Digital Interface (SDI) is a digital, uncompressed high quality video format used to transport video in film, video post production and broadcast environment. The NVIDIA Quadro® SDI Capture Card was designed to capture uncompressed 8-bit, 10-bit and 12-bit video formats directly to the graphics processing unit's (GPU) memory.

Quadro SDI Capture Card



## ABOUT THIS DOCUMENT

This installation guide explains the functionality of the operating conditions required for the physical hardware and how-to-diagnose if the system is setup to capture to NVIDIA® Quadro® FX 3800, Quadro FX 4800 and Quadro FX 5800 graphics cards.

## OTHER DOCUMENTATION

For details on using the SDK, refer to the *NVIDIA Quadro FX SDI Programmer's Guide*.

## SYSTEM REQUIREMENTS

- ▶ Supported operating systems
  - Windows XP 32 and 64
  - Linux 32 and 64
- ▶ Required NVIDIA hardware
  - If you only intend to use NVIDIA Capture:  
NVIDIA Quadro SDI capture card and supported graphics cards
    - Quadro FX 3800
    - Quadro FX 4800
    - Quadro FX 5800
  - If you want to have a complete input and output solution to NVIDIA GPU:  
NVIDIA Quadro SDI capture card and supported graphics cards
    - Quadro FX 3800 SDI
    - Quadro FX 4800 SDI
    - Quadro FX 5800 SDI
- ▶ PCI Express motherboard with 1 PCIe ×16 or PCIe ×8 slot available. For optimal results, install both the GPU and the Quadro SDI capture card. They should both go into slots on the same side of the North Bridge or South Bridge. In system with multiple chipsets, the GPU and SDI capture card should be installed into slots on the same chipset.
- ▶ NVIDIA professional graphics driver
  - For Windows: version 191.53 or later (also requires separate WDM driver)
  - For Linux: version 190.38 or later

# FUNCTIONALITY


This chapter provides an overview of the Quadro SDI capture card and its functionality. This chapter includes the following sections:

- ▶ **Feature Overview:** This section lists the hardware and supported formats.
- ▶ **Installing and Preparing Your Quadro Capture Card:** This section describes how to install the Quadro Capture Card and ensure it's properly installed.
- ▶ **Operating Your Quadro Capture Card:** This section provides an overview of capture.

## FEATURE OVERVIEW

### Input and Output Connections

- ▶ 4 BNCs labeled 1, 2, 3, 4 can be used to capture various formats including:
  - 4 single-link SD, HD-SDI inputs
  - 2 dual-link SD, HD-SDI inputs
  - 2 3G SDI single-link inputs (Level A or Level B)
  - 1 3G SDI dual-link input (Level A or Level B)

 Note: All inputs must be the same format and Genlocked.

- ▶ 1 BNC labeled 'S' is a Monitor Output of input 1

### Supported SDI Signal Formats

- ▶ 480i at 59.94 Hz (SMPTE259) NTSC
- ▶ 576i at 50.00 Hz (SMPTE260) PAL
- ▶ 25.00 Hz, 29.97 Hz, 30.00 Hz and 50.00 Hz
- ▶ 720p at 59.94 Hz, 60.00 Hz (SMPTE296)
- ▶ 1035i at 59.94 Hz, 60.00 Hz (SMPTE260)
- ▶ 1080i at 50.00 Hz, 59.94 Hz, 60.00 Hz (SMPTE274)
- ▶ 1080PsF at 24.00 Hz, 23.976 Hz
- ▶ 1080PsF at 25.00 Hz, 29.97 Hz, 30 Hz (SMPTE274)
- ▶ 1080p at 23.976 Hz, 24.00 Hz, 25.00 Hz, 29.97 Hz, 30.00 Hz (SMPTE274)
- ▶ 2048 × 1080p at 23.976 Hz, 24.00 Hz, 25.00 Hz, 29.97 Hz, 30.00 Hz, 47.96 Hz, 48 Hz, 60 Hz (SMPTE272)
- ▶ 1080p at 50.00 Hz, 59.64 Hz, 60.00 Hz (SMPTE 424M)

### Supported SDI Color Formats

- ▶ RGB 4:4:4
- ▶ YCrCb 4:2:2 or 4:4:4
- ▶ 2× YCrCb 4:2:2 + 4:2:2
- ▶ YCrCbA 4:2:2:4
- ▶ RGBA 4:4:4:4

### Supported Capture Modes

- ▶ Application-controlled using NVIDIA SDI APIs



# INSTALLING AND PREPARING YOUR QUADRO CAPTURE CARD

## Installing the Quadro Capture Card

1. Power down the system and open the chassis cover.
2. Insert the capture card into the x16 or x8 PCI Express slot.
3. Secure the card's bracket using the bracket screw(s) to the system chassis.

## Download the NVIDIA Driver

To get access to the NVIDIA graphics driver , visit the NVIDIA Web site at [www.nvidia.com](http://www.nvidia.com) and download the latest Quadro SDI drivers.

## Installing the NVIDIA Graphics Driver on Windows

If you will be installing new drivers for the Quadro FX SDI card, it is highly recommended that you uninstall any previous version of NVIDIA's driver software before installing updated graphics drivers.

Follow the instructions on the nvidia.com Web site driver download page to locate the appropriate driver to download, based on your hardware and operating system.

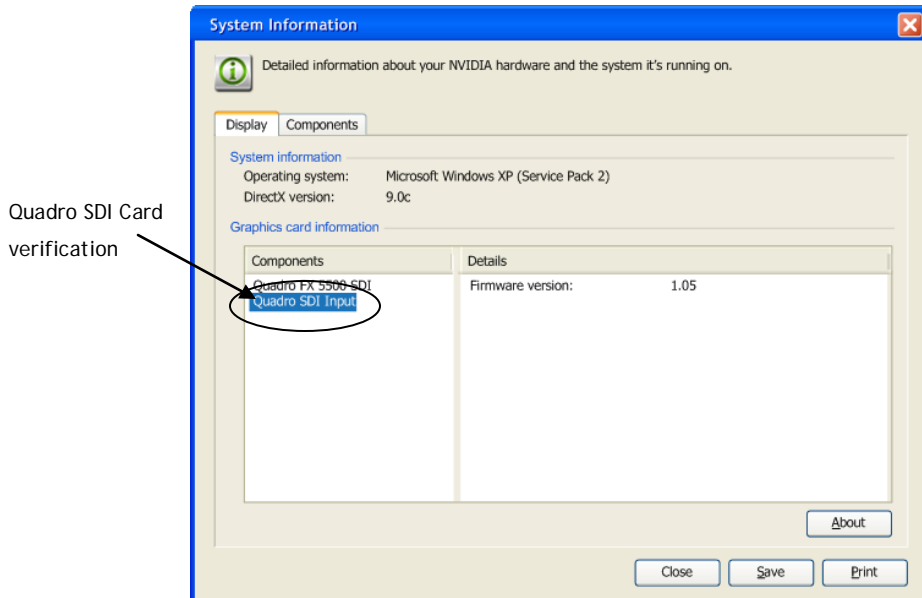
1. Click the driver download link.
2. Click Accept on the license agreement window to accept the terms.
3. Open EXE file. This launches the Install Shield Wizard.
4. Follow the instructions in the Install Shield Wizard to complete the installation.

## Installing the NVIDIA Quadro SDI Capture WDM Driver

On Windows systems, the NVIDIA Quadro SDI Capture Card requires the installation of an additional WDM driver. This driver is available from the NVIDIA Web site ([www.nvidia.com](http://www.nvidia.com)). After downloading the driver double click on setup.exe to launch the Install Shield Wizard.

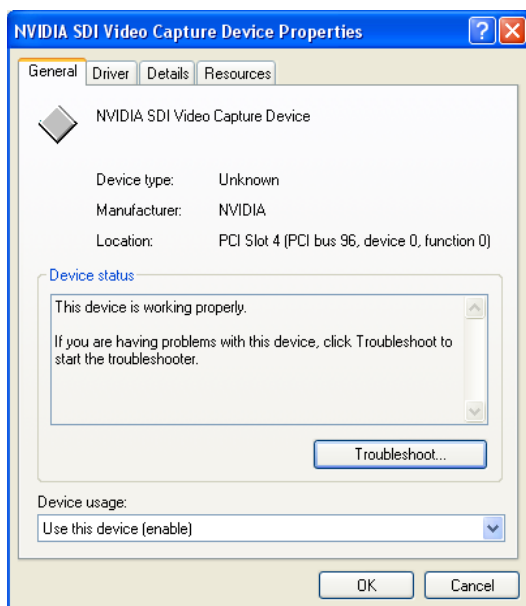
## Verifying Graphics Driver Installation

Go to Control Panel>Help>System Information and verify that the driver sees the Quadro SDI input card.



## Verifying WDM Driver Installation

1. Go to Control Panel>System>Hardware>Device Manager and verify that the driver sees the Quadro SDI input card.
2. Select NVIDIA SDI Video Capture Device under Unkown.
3. Double click to bring up the Device Properties. Under Device status, ensure that it states "This device is working properly."

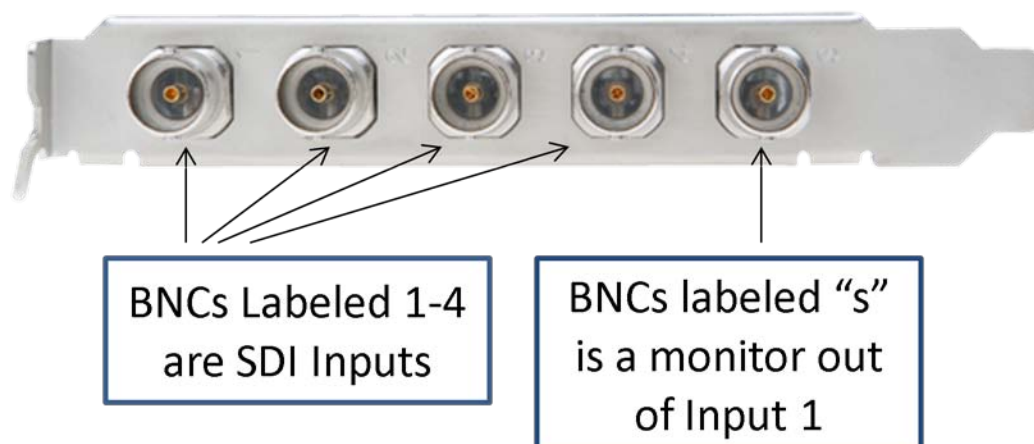


## Installing the NVIDIA Graphics Driver on Linux

1. Download the x86 or x86\_64.run file from the Quadro SDI Early Access site.
2. At the console, in run mode 3 execute the .run file.

## OPERATING QUADRO CAPTURE CARD

### Understanding the Connections



### Understanding LED Status Signals

During system boot the LEDs will remain on for 10 to 15 seconds during board diagnostic testing.

#### LED Status Signals

- ▶ No LED: no SDI signal is detected
- ▶ Steady LED: Quadro SDI capture card cannot detect valid SDI signal
- ▶ Flashing LED: Quadro SDI capture card detects SDI signal

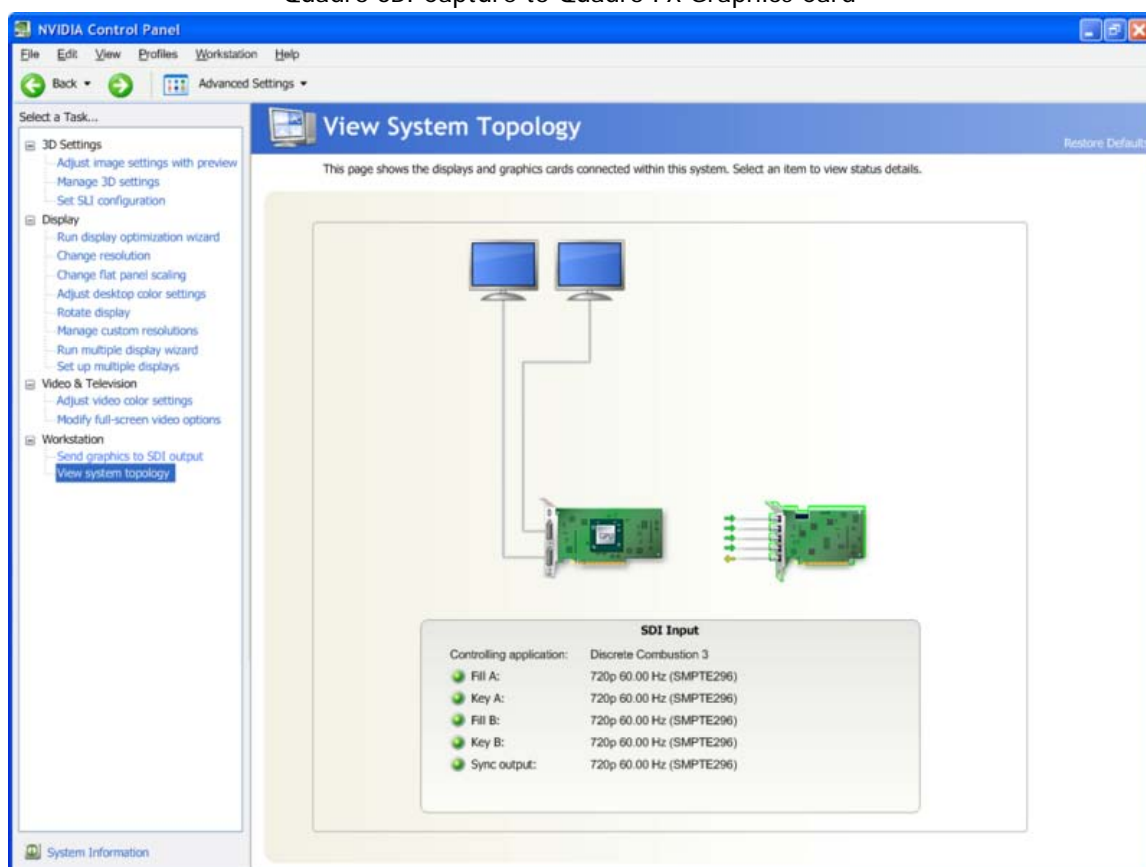
## Viewing the SDI Connection Status Using Topology Viewer

For Workstation systems, a graphical topological view of the system is available to let you quickly check the status of your particular environment. The View System Topology page provides SDI status information for each display, graphics card and Quadro SDI accessory cards.

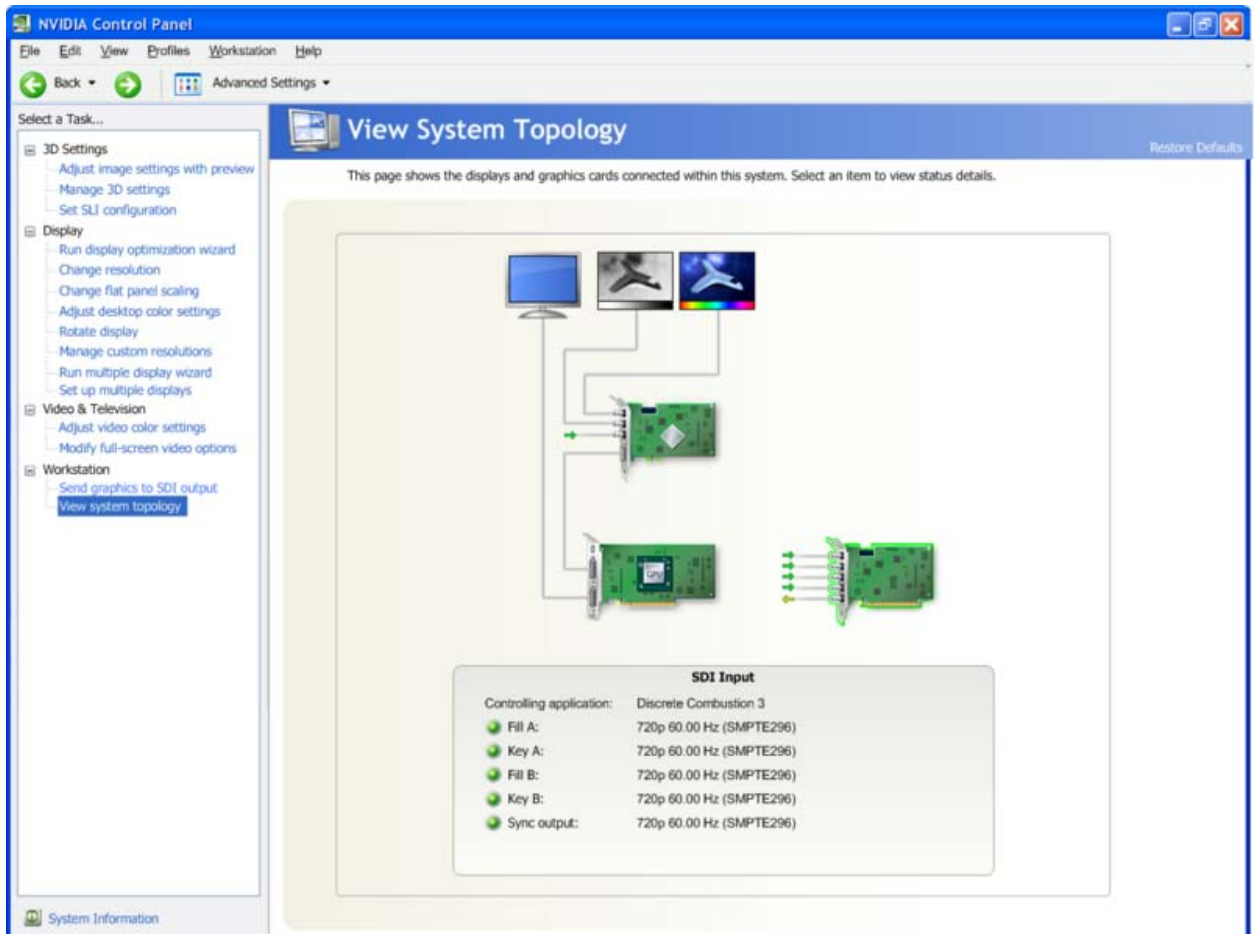
### To View the System Topology of Your Setup

1. Select a task pane under Workstation from the NVIDIA Control Panel.
2. Click **View System Topology**.
3. Click any of the icons to view connection and signal status details.

Quadro SDI Capture to Quadro FX Graphics Card



Quadro SDI Capture to Quadro FX SDI



## Notice

ALL NVIDIA DESIGN SPECIFICATIONS, REFERENCE BOARDS, FILES, DRAWINGS, DIAGNOSTICS, LISTS, AND OTHER DOCUMENTS (TOGETHER AND SEPARATELY, "MATERIALS") ARE BEING PROVIDED "AS IS." NVIDIA MAKES NO WARRANTIES, EXPRESSED, IMPLIED, STATUTORY, OR OTHERWISE WITH RESPECT TO THE MATERIALS, AND EXPRESSLY DISCLAIMS ALL IMPLIED WARRANTIES OF NONINFRINGEMENT, MERCHANTABILITY, AND FITNESS FOR A PARTICULAR PURPOSE.

Information furnished is believed to be accurate and reliable. However, NVIDIA Corporation assumes no responsibility for the consequences of use of such information or for any infringement of patents or other rights of third parties that may result from its use. No license is granted by implication of otherwise under any patent rights of NVIDIA Corporation. Specifications mentioned in this publication are subject to change without notice. This publication supersedes and replaces all other information previously supplied. NVIDIA Corporation products are not authorized as critical components in life support devices or systems without express written approval of NVIDIA Corporation.

## HDMI

HDMI, the HDMI logo, and High-Definition Multimedia Interface are trademarks or registered trademarks of HDMI Licensing LLC.

## Macrovision Compliance Statement

NVIDIA Products that are Macrovision enabled can only be sold or distributed to buyers with a valid and existing authorization from Macrovision to purchase and incorporate the device into buyer's products.

Macrovision copy protection technology is protected by U.S. patent numbers 5,583,936; 6,516,132; 6,836,549; and 7,050,698 and other intellectual property rights. The use of Macrovision's copy protection technology in the device must be authorized by Macrovision and is intended for home and other limited pay-per-view uses only, unless otherwise authorized in writing by Macrovision. Reverse engineering or disassembly is prohibited.

## OpenCL

OpenCL is a trademark of Apple Inc. used under license to the Khronos Group Inc.

## Trademarks

NVIDIA, the NVIDIA logo, ForceWare and Quadro are trademarks or registered trademarks of NVIDIA Corporation in the U.S. and other countries. Other company and product names may be trademarks of the respective companies with which they are associated.

## Copyright

© 2009 NVIDIA Corporation. All rights reserved.