



# NVIDIA NVIEW DESKTOP MANAGEMENT SOFTWARE

TB-03966-001\_v03 | September 2013

**Technical Brief**



## DOCUMENT CHANGE HISTORY

TB-03966-001\_v03

| Version | Date              | Authors | Description of Change  |
|---------|-------------------|---------|--|
| 01      | April 21, 2008    | DW      | Initial Release  |
| 02      | May 5, 2009       | VL, SM  | General edits throughout document  |
| 03      | September 4, 2013 | CM, SM  | <ul style="list-style-type: none"><li>•Added Bird's Eye View</li><li>•Updated to include Windows 7 and Windows 8</li></ul> |

# TABLE OF CONTENTS

|  |          |
|--|----------|
| <b>Introduction</b> .....                | <b>1</b> |
| nView for Windows 7 and Windows 8 .....  | 2        |
| <b>Software Features</b> .....           | <b>3</b> |
| Setup Wizard .....                       | 3        |
| Windows and Dialog Box Management .....  | 4        |
| Gridlines.....                           | 4        |
| Virtual Desktops.....                    | 6        |
| Profiles .....                           | 7        |
| Application Specific Configuration ..... | 7        |
| Hot Keys.....                            | 8        |
| Extended Taskbar .....                   | 8        |
| <b>Conclusion</b> .....                  | <b>9</b> |

## LIST OF FIGURES

|           |  |   |
|-----------|--|---|
| Figure 1. | Common Multiple Display Environments ..... | 2 |
| Figure 2. | nView Setup Wizard.....                    | 3 |
| Figure 3. | Windows and Dialog Box Management.....     | 4 |
| Figure 4. | Grid Options.....                          | 5 |
| Figure 5. | Bird's Eye View Grid .....                 | 5 |
| Figure 6. | nView Setup .....                          | 6 |
| Figure 7. | Profiles Control .....                     | 7 |

# INTRODUCTION

NVIDIA® nView® Desktop Management Software delivers maximum flexibility for single or multi-display setups, providing unprecedented end-user control of the desktop experience for increased productivity. NVIDIA's nView leverages NVIDIA Quadro® and NVIDIA® NVS™ graphics processing units (GPUs), making it easy for you to set up multiple monitors, manage a variety of different desktops, and run multiple windows and applications simultaneously.

Anyone who has ever used a system with multiple or large screen monitors can attest to the increased productivity and efficiency that comes with increased screen real estate. Multimedia users, designers, game and software developers, and anyone who runs multiple applications and multiple application windows can benefit from nView software.

The key capabilities of nView software include:

- ▶ **New Bird's Eye View:** Provides a zoomed out view of your desktop area, including multi-monitor setups and virtual desktops
- ▶ **Gridlines:** Using the new Bird's Eye View editor, you can use pre-defined gridline templates or draw your own gridlines to divide your monitors into sub-screens for more efficient use of your screen real estate
- ▶ **Extended Taskbar:** Extend your Windows taskbar across all your displays (even if they are at different resolutions - \*under Windows Vista, Windows 7, and Windows 8 only\*)
- ▶ **Profiles:** Create standard configurations for different types of users within your organization or different monitor configurations that you frequently use
- ▶ **Virtual Desktops:** Create, customize, and switch between different desktops for specific jobs, and get rid of clutter completely. For example, you can set up one desktop for office applications and web surfing, another for CAD, and yet another for multimedia.

So if you use multiple monitors or a single, large display, nView will increase your productivity and make your workflow more efficient.

This technical brief provides an overview of the features nView software gives you. For detailed information on how to use nView and its features, please consult the *nView User's Guide*, available for download from the NVIDIA Web site.



Figure 1. Common Multiple Display Environments

## NVIEW FOR WINDOWS 7 AND WINDOWS 8

Beginning with NVIDIA Driver Version 185.85, nView supports Windows 7.

Beginning with NVIDIA Driver Version 295.73, nView supports Windows 8. Windows Vista and newer operating system support is available only with NVIDIA® Quadro® and NVS hardware. nView for Windows XP will continue to function with NVIDIA® GeForce® hardware.

# SOFTWARE FEATURES

## SETUP WIZARD

The first challenge with using multiple monitors is setting up and configuring your displays. nView provides a setup wizard that assists you in configuring your displays quickly and correctly. The Wizard helps you set up the most commonly used nView features through intuitive menus. Each step of the way, it prompts you with text, diagrams, and pictures to configure nView to meet your particular needs.



Figure 2. nView Setup Wizard

## WINDOWS AND DIALOG BOX MANAGEMENT

Once you've selected your display mode, nView gives you full control over repositioning dialog boxes and application windows, letting you create and maintain the ideal workspace.

With nView, you can move dialog boxes onto a specific display, to the mouse cursor, or have them appear on the same display as the application window (refer to Figure 4). You no longer have to put up with dialog boxes that appear in random monitors or are split between two monitors.

Application and window management gives you control over where your applications appear. nView lets you control each window through system menu extensions, giving you quick access to multiple desktop integration, individual application settings, window move functions, and application specific extensions (refer to Figure 3).

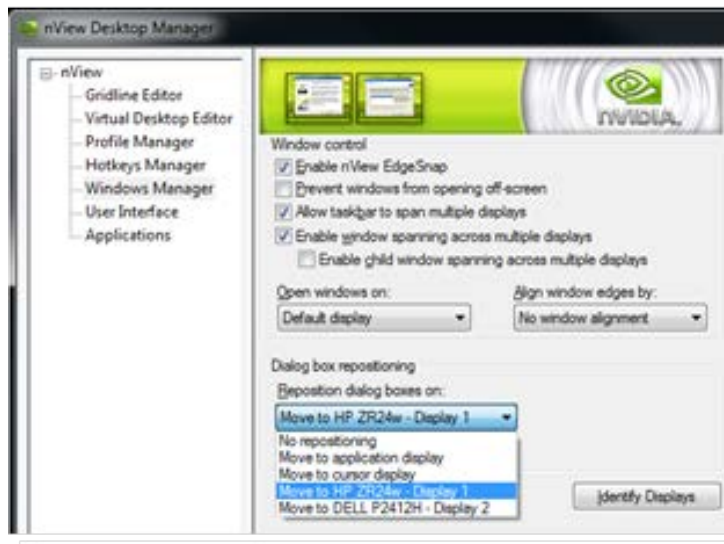


Figure 3. Windows and Dialog Box Management

## GRIDLINES

With the re-designed nView user interface, comes a new way to draw and configure gridlines to define virtual regions on any or all of your displays and reposition and maximize your windows and dialog boxes to these regions instead of the monitor as a whole. Using the templates field, you draw and drag individual lines using the options in Figure 4. You then can create custom grids such as in Figure 5.

Gridlines are particularly useful if you have one or more very large displays, like a 30-inch monitor and habitually work with multiple application windows open at the same



time. With gridlines you can establish up to ten of these regions if you are using a Quadro or NVS card.

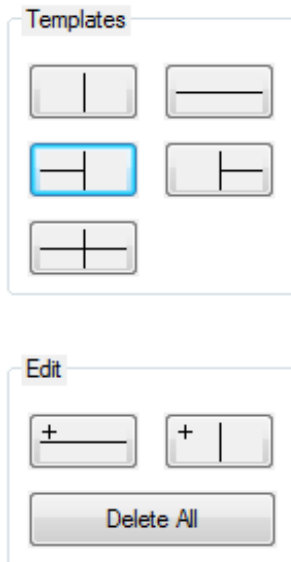


Figure 4. Grid Options

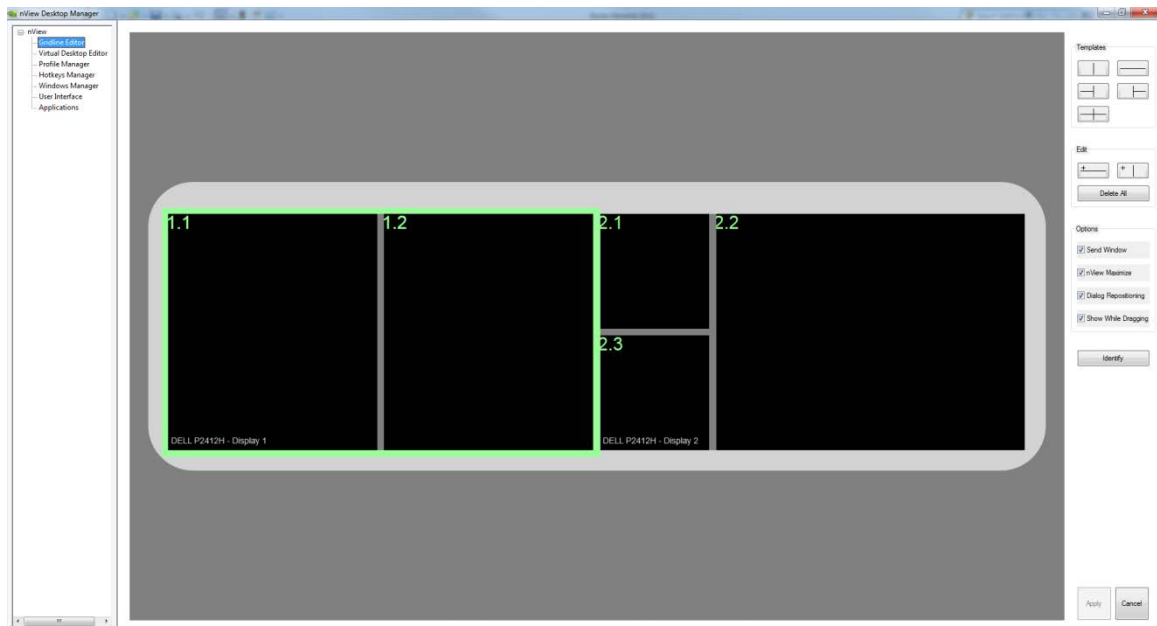


Figure 5. Bird's Eye View Grid

## VIRTUAL DESKTOPS

While application and windows management helps you visually organize your desktop, your workspace can still become cluttered if you have too many windows open at once. nView solves this by allowing you to create up to 32 individually named desktops.

You can create a desktop for different categories of work. Each desktop is fully customizable, allowing you to change the desktop name, choose the background and look and feel of the desktop, and control what applications are available on each desktop. Switching between desktops is a snap, using either the nView taskbar icon or hot keys.

For example, a financial trader could have a trading desktop, an Internet desktop, and a word processing desktop. Her trading software and Microsoft Excel might launch only on the trading desktop, Internet Explorer on the Internet desktop, and Microsoft Word on the word processing one. Email and instant messaging might be set to launch onto any of the three. Furthermore, dialog boxes for the trading software might be set to appear wherever the mouse cursor is, ensuring the she doesn't miss a trade because she was working on a different desktop at the moment the trade came in.

A software engineer, on the other hand, might want to prevent his email and instant messaging software from opening on his coding desktop, ensuring that he isn't distracted by incoming email while he's working heads down amidst his code.

nView stores desktop settings on a per-user basis, rather than on a global basis. So if different people use the same system, they each can have their own desktops configured just the way they like them.



Figure 6. nView Setup

## PROFILES

Large organizations that deploy thousands of systems often use disk images to make system setup and technical support easier for the IT department. nView's profiles feature lets an IT department easily install thousands of nView-enabled systems with a few standard configurations (for example, one for each department) and no additional end-user setup (refer to Figure 7).

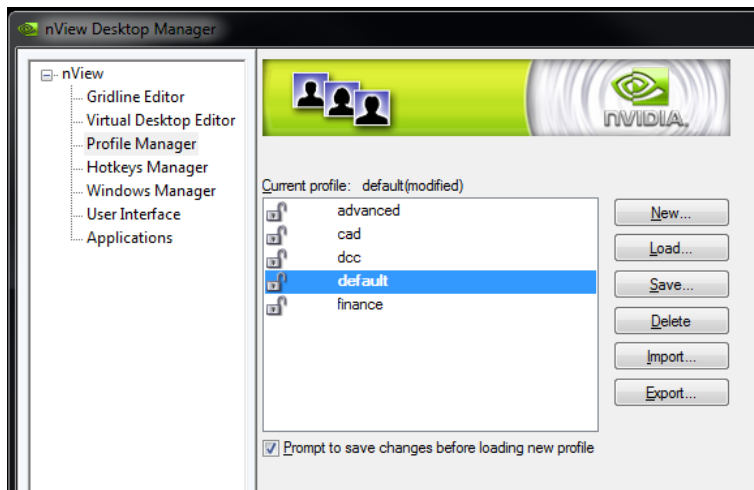


Figure 7. Profiles Control

Even if you're not part of a large organization, you can benefit from the profiles feature if you frequently change your monitor setup. If, for example, you have a notebook that you sometimes run docked with a second monitor and sometimes run standalone, you can set up a profile for each configuration. In this case, you can set up two profiles on your system, a docked version and an undocked version with different settings. When you switch configuration (for example, dock or undock your notebook computer), you can load the desired configuration with a single keystroke.

## APPLICATION SPECIFIC CONFIGURATION

In addition to multiple desktops and profiles, nView lets you individually configure each application you use. You can set an application to always appear on a particular monitor or to prevent it from spanning across multiple displays. You can have the dialog boxes associated with that application configured separately from others.

## HOT KEYS

nView has a straightforward configuration utility that lets you associate every nView action to a keyboard hot key. Setting up hot keys is as easy as selecting the nView action, pressing the keystrokes, and saving the new hot key.

Whether it is managing windows, changing desktops, or using zoom features, nView's hot keys let you maximize your productivity by controlling common actions with single keystrokes.

## EXTENDED TASKBAR

If you are using multiple displays in either the span or DualView modes or using NVIDIA® Mosaic technology, you can extend the Windows taskbar across all of the displays.

There are a few differences between the way Extended Taskbar works under Windows Vista, Windows 7, Windows 8, vs. Windows XP. When the taskbar is extended to two or more displays:

- ▶ Under Windows XP, the taskbar behaves as no different as when nView is disabled. Under Windows Vista, Windows 7, or Windows 8 the applications open in a display are shown in the taskbar for that display.
- ▶ Under Windows XP, all displays need to be at the same resolution. Under Windows Vista, Windows 7, or Windows 8 users are not limited to keeping the same resolution on all displays.

# CONCLUSION

NVIDIA nView technology is the pinnacle of advanced display functionality and performance. It allows you to easily setup and customize your displays to meet your individual needs. With nView, taking advantage of the increased productivity and efficiency that only a multi-display setup can provide is a snap.

## Notice

The information provided in this specification is believed to be accurate and reliable as of the date provided. However, NVIDIA Corporation ("NVIDIA") does not give any representations or warranties, expressed or implied, as to the accuracy or completeness of such information. NVIDIA shall have no liability for the consequences or use of such information or for any infringement of patents or other rights of third parties that may result from its use. This publication supersedes and replaces all other specifications for the product that may have been previously supplied.

NVIDIA reserves the right to make corrections, modifications, enhancements, improvements, and other changes to this specification, at any time and/or to discontinue any product or service without notice. Customer should obtain the latest relevant specification before placing orders and should verify that such information is current and complete.

NVIDIA products are sold subject to the NVIDIA standard terms and conditions of sale supplied at the time of order acknowledgement, unless otherwise agreed in an individual sales agreement signed by authorized representatives of NVIDIA and customer. NVIDIA hereby expressly objects to applying any customer general terms and conditions with regard to the purchase of the NVIDIA product referenced in this specification.

NVIDIA products are not designed, authorized or warranted to be suitable for use in medical, military, aircraft, space or life support equipment, nor in applications where failure or malfunction of the NVIDIA product can reasonably be expected to result in personal injury, death or property or environmental damage. NVIDIA accepts no liability for inclusion and/or use of NVIDIA products in such equipment or applications and therefore such inclusion and/or use is at customer's own risk.

NVIDIA makes no representation or warranty that products based on these specifications will be suitable for any specified use without further testing or modification. Testing of all parameters of each product is not necessarily performed by NVIDIA. It is customer's sole responsibility to ensure the product is suitable and fit for the application planned by customer and to do the necessary testing for the application in order to avoid a default of the application or the product. Weaknesses in customer's product designs may affect the quality and reliability of the NVIDIA product and may result in additional or different conditions and/or requirements beyond those contained in this specification. NVIDIA does not accept any liability related to any default, damage, costs or problem which may be based on or attributable to: (i) the use of the NVIDIA product in any manner that is contrary to this specification, or (ii) customer product designs.

No license, either expressed or implied, is granted under any NVIDIA patent right, copyright, or other NVIDIA intellectual property right under this specification. Information published by NVIDIA regarding third-party products or services does not constitute a license from NVIDIA to use such products or services or a warranty or endorsement thereof. Use of such information may require a license from a third party under the patents or other intellectual property rights of the third party, or a license from NVIDIA under the patents or other intellectual property rights of NVIDIA. Reproduction of information in this specification is permissible only if reproduction is approved by NVIDIA in writing, is reproduced without alteration, and is accompanied by all associated conditions, limitations, and notices.

ALL NVIDIA DESIGN SPECIFICATIONS, REFERENCE BOARDS, FILES, DRAWINGS, DIAGNOSTICS, LISTS, AND OTHER DOCUMENTS (TOGETHER AND SEPARATELY, "MATERIALS") ARE BEING PROVIDED "AS IS." NVIDIA MAKES NO WARRANTIES, EXPRESSED, IMPLIED, STATUTORY, OR OTHERWISE WITH RESPECT TO THE MATERIALS, AND EXPRESSLY DISCLAIMS ALL IMPLIED WARRANTIES OF NONINFRINGEMENT, MERCHANTABILITY, AND FITNESS FOR A PARTICULAR PURPOSE. Notwithstanding any damages that customer might incur for any reason whatsoever, NVIDIA's aggregate and cumulative liability towards customer for the products described herein shall be limited in accordance with the NVIDIA terms and conditions of sale for the product.

## Trademarks

NVIDIA, the NVIDIA logo, GeForce, nView, NVS, and Quadro are trademarks and/or registered trademarks of NVIDIA Corporation in the U.S. and other countries. Other company and product names may be trademarks of the respective companies with which they are associated.

## Copyright

© 2008, 2009, 2013 NVIDIA Corporation. All rights reserved.